

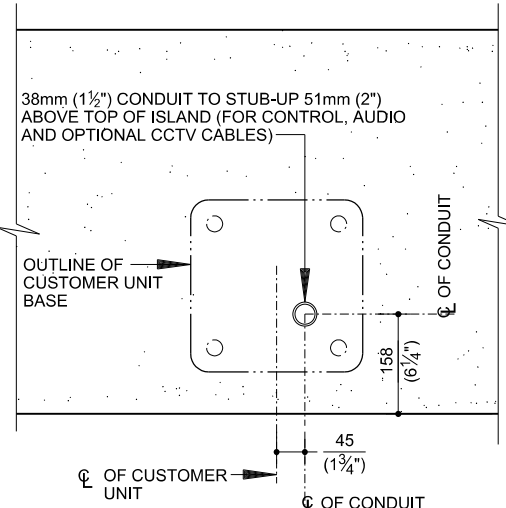
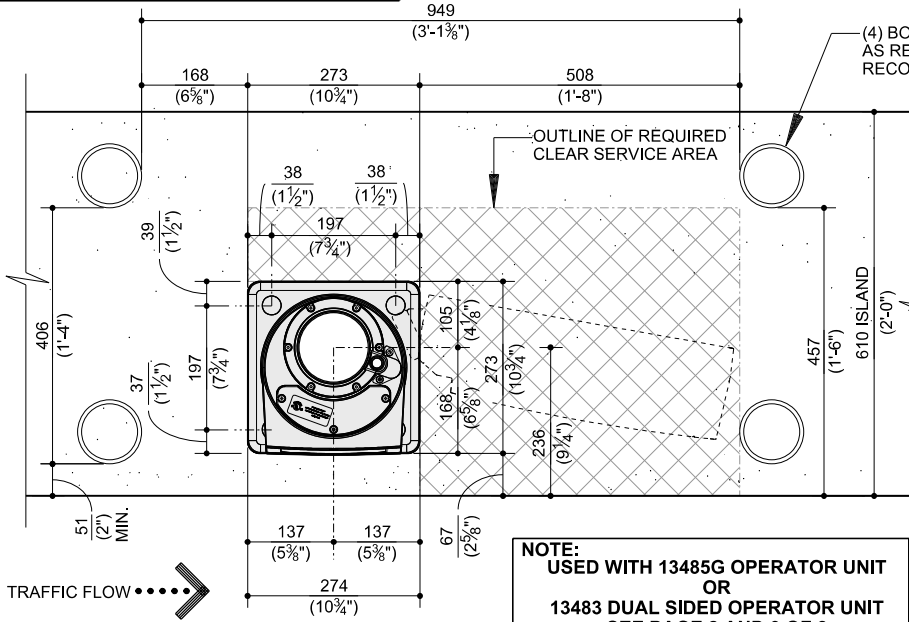
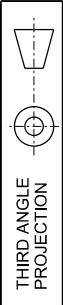
L1012

CALL 1-800-999-3600

13486G CUSTOMER UNIT DETAILS

SEE PAGE 2 OF 8 FOR LISTINGS AND APPROVALS

DIMENSIONS IN MILLIMETRES
(DIMENSIONS IN FEET-INCHES)



NOTE:
USED WITH 13485G OPERATOR UNIT OR 13483 DUAL SIDED OPERATOR UNIT
SEE PAGE 2 AND 3 OF 8
MAXIMUM TUBE LENGTH 152 METERS (500 LINEAR FEET)

DETAIL A
(WHEN CONTROL AND AUDIO CABLES ARE TO BE RUN UNDER TO UNDER)

13mm (1/2") DIA. CONDUIT TO HOUSE OPTIONAL CCTV CABLES

SEE VAT 21GX TYPICAL SCHEMATIC USING ONE-WAY AND TWO WAY CCTV SYSTEM FILE NUMBER 178-2055

13mm (1/2") DIA. CONDUIT TO HOUSE CONTROL AND AUDIO CABLES
CONTROL CABLE - "GG" CABLE #20 GAUGE STRANDED TINNED COPPER, 7 CONDUCTOR, UNSHIELDED, 300V PP/PVC (19-200216-0062) BY DIEBOLD

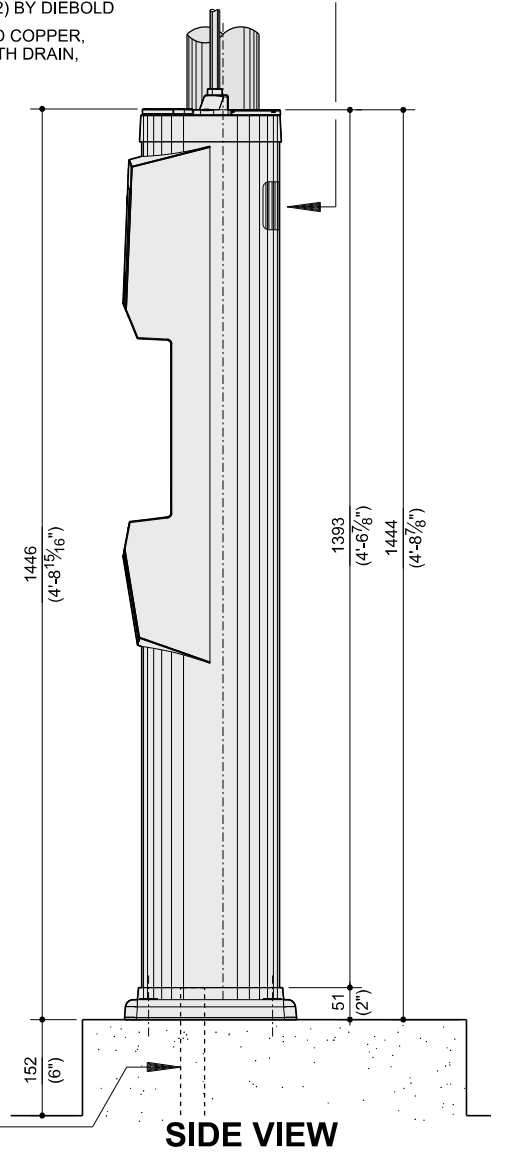
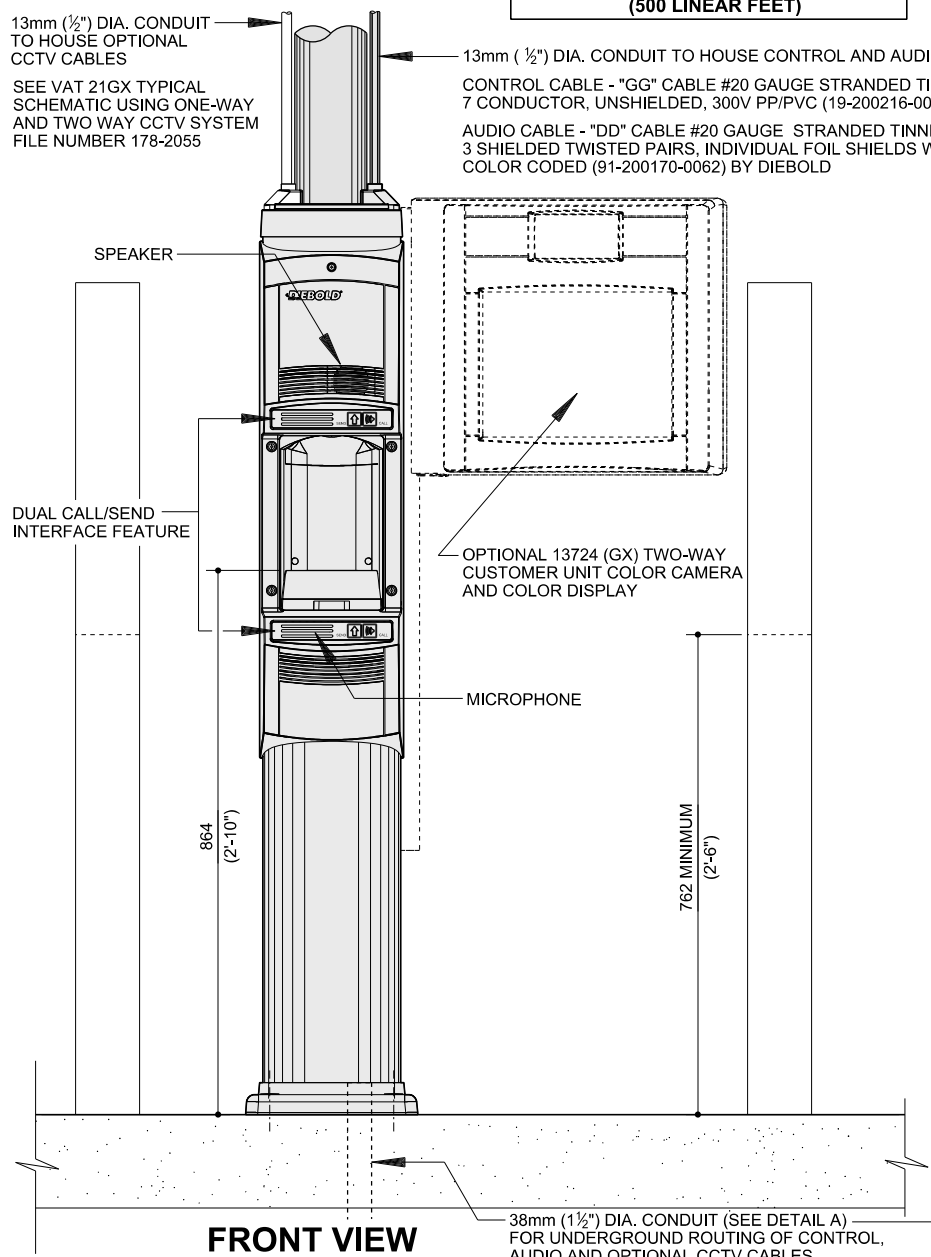
AUDIO CABLE - "DD" CABLE #20 GAUGE STRANDED TINNED COPPER, 3 SHIELDED TWISTED PAIRS, INDIVIDUAL FOIL SHIELDS WITH DRAIN, COLOR CODED (91-200170-0062) BY DIEBOLD

IDENTIFICATION PANEL - NUMBER AND COLOR CODED TO MATCH OPERATOR UNIT

PAGE 1 OF 8

ALL DIMENSIONS AND DESIGN CRITERIA SUBJECT TO CHANGE WITHOUT NOTICE

FILE NO. 178-2076 REV. 2



38mm (1 1/2") DIA. CONDUIT (SEE DETAIL A) FOR UNDERGROUND ROUTING OF CONTROL, AUDIO AND OPTIONAL CCTV CABLES.

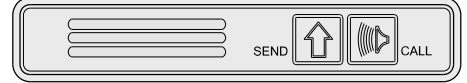
CALL 1-800-999-3600

NOTE:
MAXIMUM TUBE LENGTH 152 METERS
(500 LINEAR FEET)

LISTINGS AND APPROVALS

- CLASSIFIED TO UL 345R SAFETY OF INFORMATION TECHNOLOGY EQUIPMENT
- UL TESTED TO THE FOLLOWING STANDARDS:
UL 114 OFFICE APPLIANCE & BUSINESS EQUIPMENT; UL 50 RAIN TEST SPECIFICATION
- UNDERWRITERS LABORATORIES (UL) CORPORATE HEADQUARTERS
333 PFINGSTEN ROAD
NORTHBROOK, IL 60062-2096

CUSTOMER CONTROL PANEL X 2

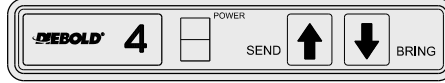


SEND BUTTON: A MOMENTARY ACTION BUTTON, WHEN PRESSED BY THE CUSTOMER, DISPATCHES THE CARRIER TO THE OPERATOR.

CALL BUTTON: A MOMENTARY ACTION BUTTON, WHEN PRESSED BY THE CUSTOMER, ACTIVATES THE AUDIO CHIME, INDICATING COMMUNICATION IS DESIRED.

LOCATION ABOVE AND BELOW CARRIER ACCESS

OPERATOR CONTROL PANEL



SEND BUTTON: A MOMENTARY ACTION BUTTON, WHEN PRESSED BY THE OPERATOR, DISPATCHES THE CARRIER TO THE CUSTOMER.

BRING BUTTON: A MOMENTARY ACTION BUTTON, WHEN PRESSED BY THE OPERATOR, RECALLS THE CARRIER FROM THE CUSTOMER UNIT (NOT IN-FLIGHT).

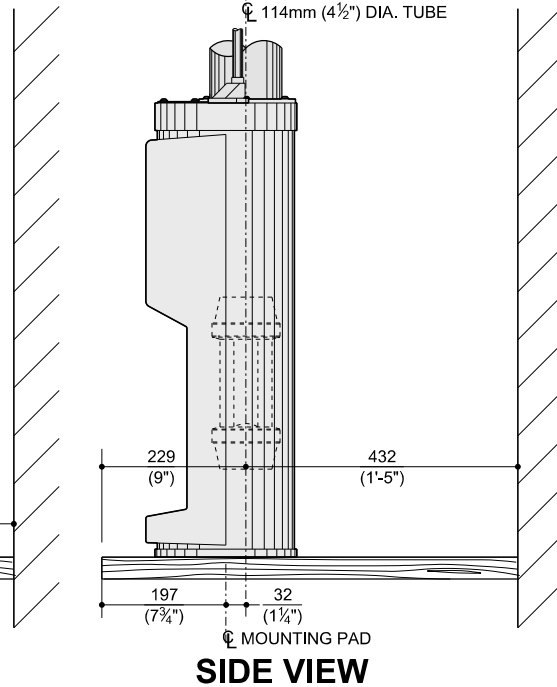
POWER SWITCH: TURNS SYSTEM ON AND OFF. BEFORE SYSTEM IS TURNED OFF CARRIER MUST BE RETURNED TO OPERATOR UNIT AND OPERATOR DOOR MUST BE OPEN

TYPICAL TRANSACTION

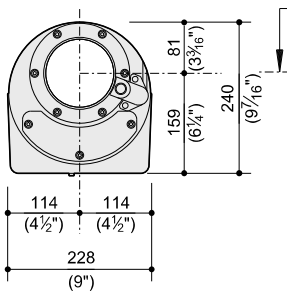
CUSTOMER ARRIVES AT THE CUSTOMER UNIT, WITH DOOR OPEN AND THE CARRIER PRESENT. CUSTOMER PLACES TRANSACTION INSIDE CARRIER, AND PASSES SEND BUTTON. BLOWERS ENERGIZE AND THE CARRIER IS DISPATCHED TO THE OPERATOR. UPON ARRIVAL AT THE OPERATOR, THE OPERATOR TERMINAL DOOR WILL OPEN AND THE CUSTOMER UNIT DOOR WILL CLOSE.

WHEN THE OPERATOR COMPLETES THE TRANSACTION, THE CARRIER IS PLACED IN THE OPERATOR TERMINAL, AND THE SEND BUTTON IS PRESSED. BLOWERS ENERGIZE, AND THE CARRIER IS DISPATCHED TO THE CUSTOMER. AFTER THE CARRIER ARRIVES IN THE CUSTOMER UNIT, THE CUSTOMER UNIT DOOR WILL OPEN, AND THE OPERATOR UNIT DOOR WILL CLOSE.

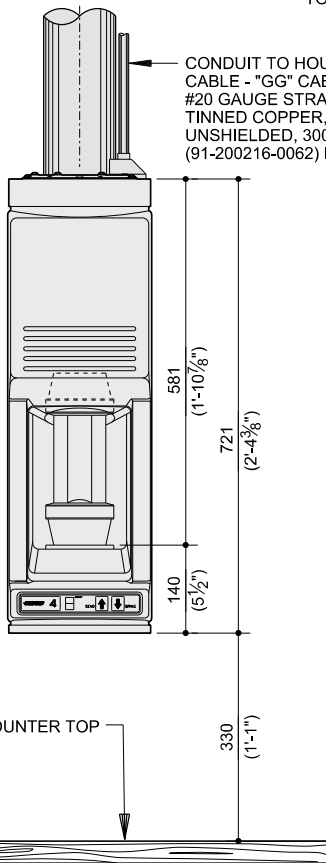
ALTERNATE OPERATOR UNIT INSTALLATION



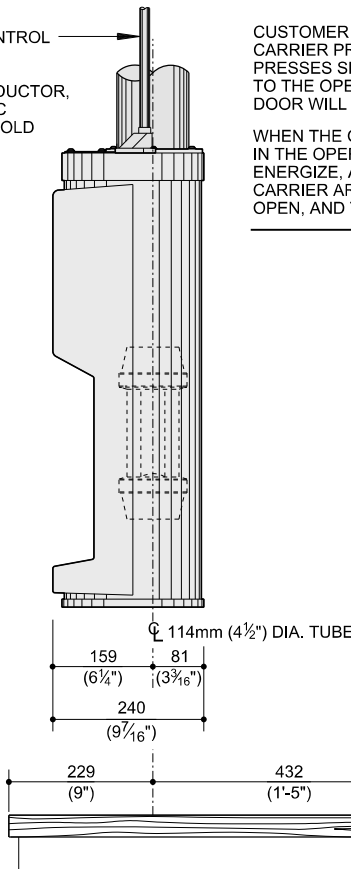
DIMENSIONS IN MILLIMETRES
(DIMENSIONS IN FEET-INCHES)



PLAN VIEW



FRONT VIEW

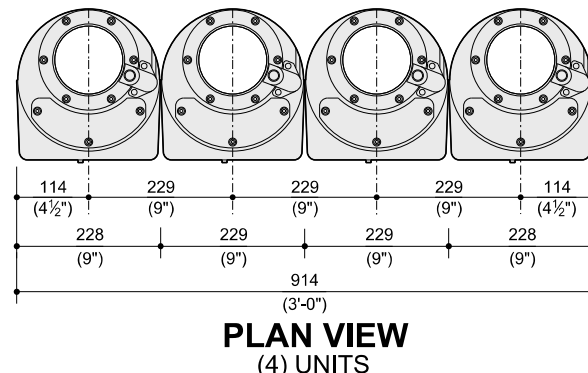
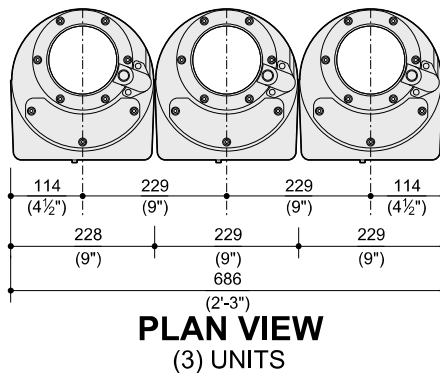
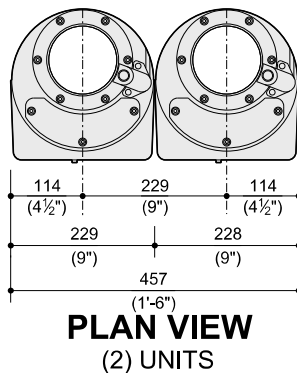


SIDE VIEW

PAGE 2 OF 8

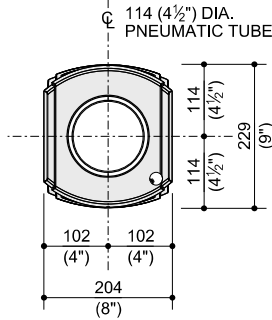
*ALL DIMENSIONS AND DESIGN CRITERIA
SUBJECT TO CHANGE WITHOUT NOTICE*

MULTIPLE UNIT CONFIGURATION



CALL 1-800-999-3600

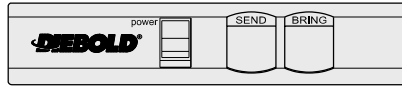
DIMENSIONS IN MILLIMETRES
(DIMENSIONS IN FEET-INCHES)



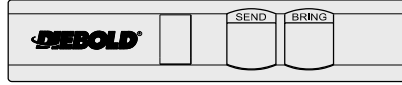
PLAN VIEW

OPERATOR CONTROL PANEL

SIDE WITH POWER SWITCH



SIDE WITH NO POWER SWITCH

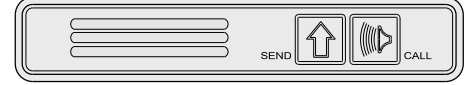


SEND BUTTON: A MOMENTARY ACTION BUTTON, WHEN PRESSED BY THE OPERATOR, DISPATCHES THE CARRIER TO THE CUSTOMER.

BRING BUTTON: A MOMENTARY ACTION BUTTON, WHEN PRESSED BY THE OPERATOR, RECALLS THE CARRIER FROM THE CUSTOMER (NOT IN-FLIGHT).

POWER SWITCH: LOCATED ONLY ON ONE SIDE OF THE UNIT. TURNS SYSTEM ON AND OFF. BEFORE SYSTEM IS TURNED OFF CARRIER MUST BE RETURNED TO OPERATOR UNIT AND OPERATOR DOOR MUST BE OPEN.

CUSTOMER CONTROL PANEL X 2



SEND BUTTON: A MOMENTARY ACTION BUTTON, WHEN PRESSED BY THE CUSTOMER, DISPATCHES THE CARRIER TO THE OPERATOR.

CALL BUTTON: A MOMENTARY ACTION BUTTON, WHEN PRESSED BY THE CUSTOMER, ACTIVATES THE AUDIO CHIME, INDICATING COMMUNICATION IS DESIRED.

LOCATION ABOVE AND BELOW CARRIER ACCESS

TYPICAL TRANSACTION

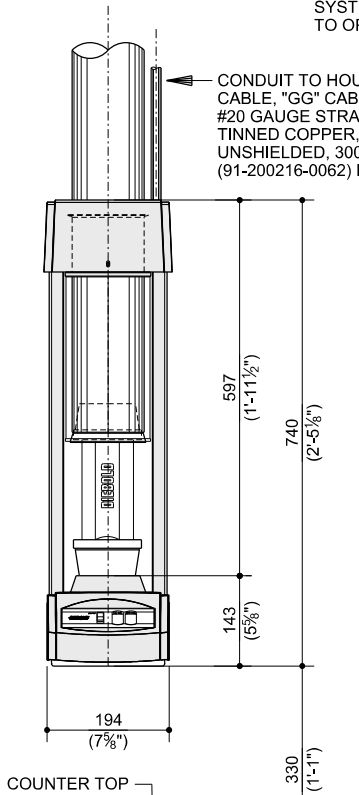
CUSTOMER ARRIVES AT THE CUSTOMER UNIT, WITH THE DOOR OPEN AND THE CARRIER PRESENT. CUSTOMER PLACES TRANSACTION INSIDE CARRIER, AND PASSES SEND BUTTON. BLOWERS ENERGIZE AND THE CARRIER IS DISPATCHED TO THE OPERATOR. UPON ARRIVAL AT THE OPERATOR, THE OPERATOR TERMINAL DOOR WILL OPEN AND THE CUSTOMER UNIT DOOR WILL CLOSE.

WHEN THE OPERATOR COMPLETES THE TRANSACTION, THE CARRIER IS PLACED IN THE OPERATOR TERMINAL, AND THE SEND BUTTON IS PRESSED, BLOWERS ENERGIZE, AND THE CARRIER IS DISPATCHED TO THE CUSTOMER. AFTER THE CARRIER ARRIVES IN THE CUSTOMER UNIT, THE CUSTOMER UNIT DOOR WILL OPEN, AND THE OPERATOR UNIT DOOR WILL CLOSE.

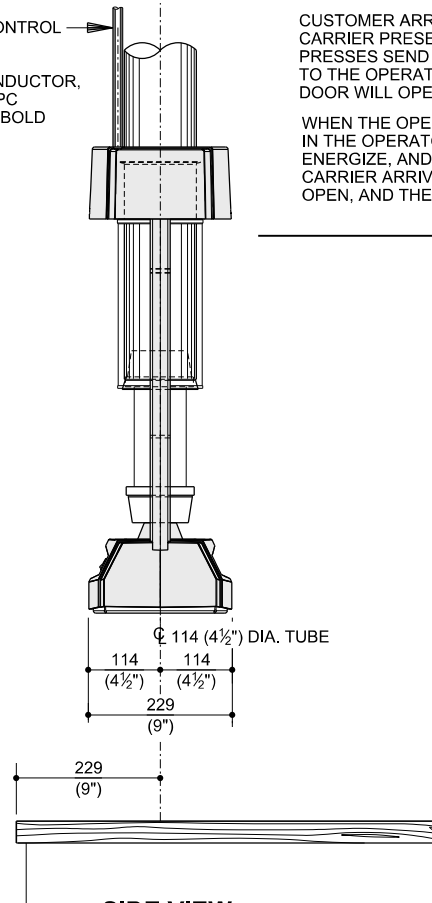


PAGE 3 OF 8

ALL DIMENSIONS AND DESIGN CRITERIA SUBJECT TO CHANGE WITHOUT NOTICE

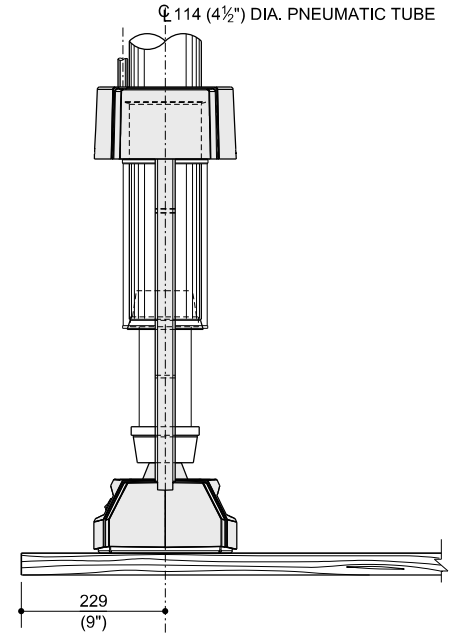


FRONT VIEW



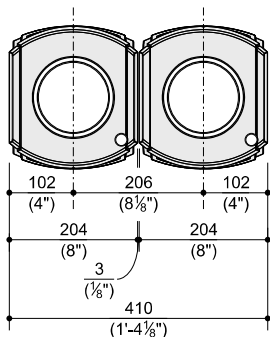
SIDE VIEW

ALTERNATE OPERATOR UNIT INSTALLATION

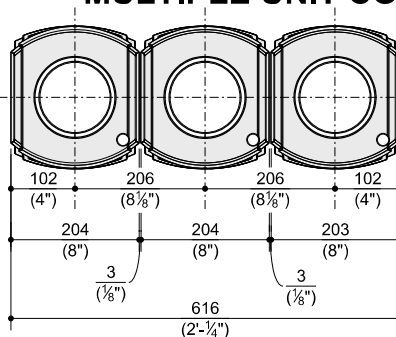


SIDE VIEW

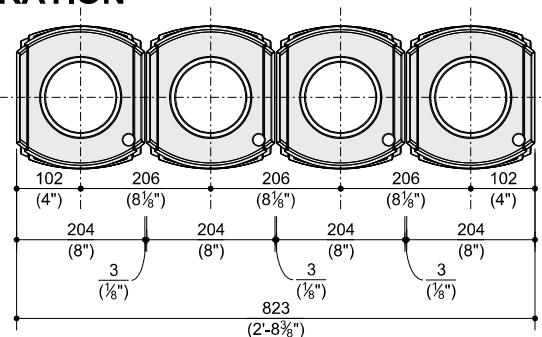
MULTIPLE UNIT CONFIGURATION



PLAN VIEW (2) UNITS



PLAN VIEW (3) UNITS



PLAN VIEW (4) UNITS

FILE NO. 178-2076 REV. 2

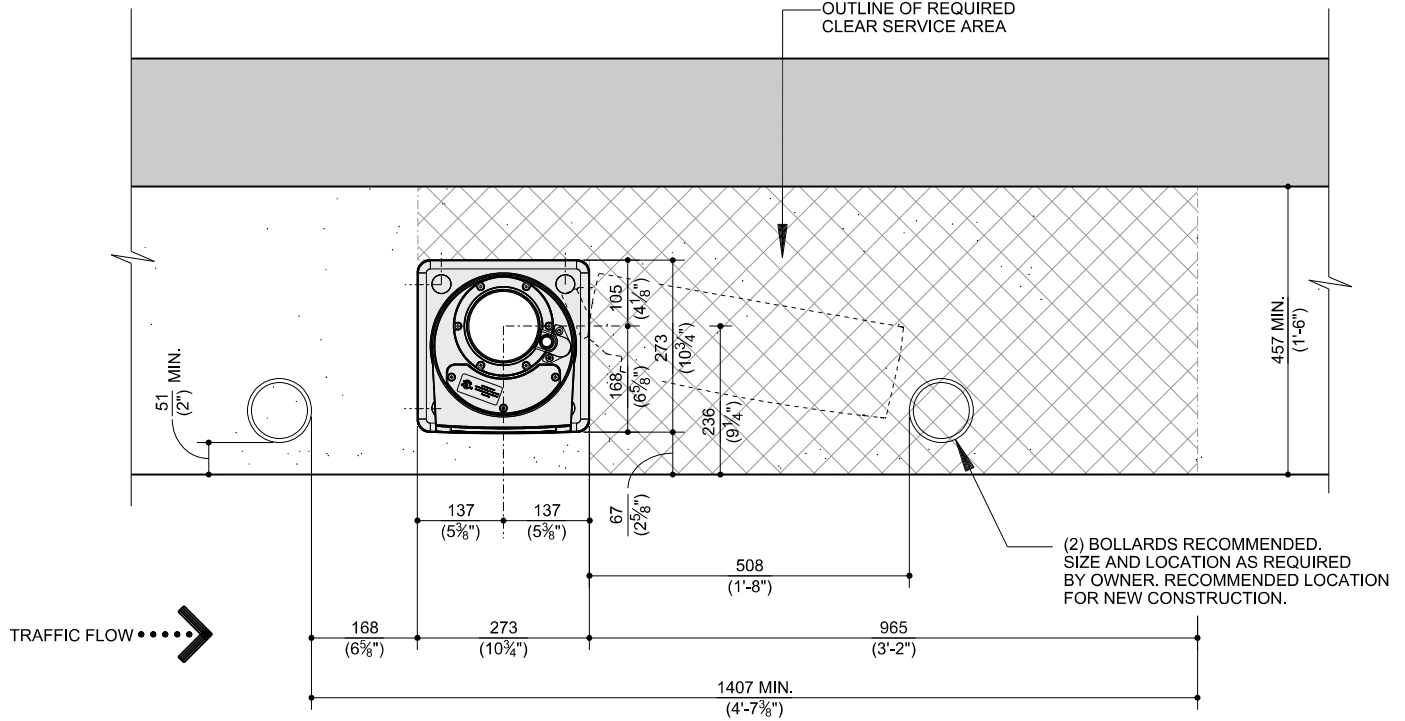
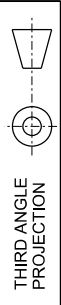
NOTE:

DETAILS SHOWN ARE FOR VAT 21GX INSTALLATIONS WHERE CUSTOMER'S SITE CONDITIONS REQUIRE THE CUSTOMER UNIT POSITIONED IN THE FIRST LANE AND/OR AGAINST THE BUILDING WALL.

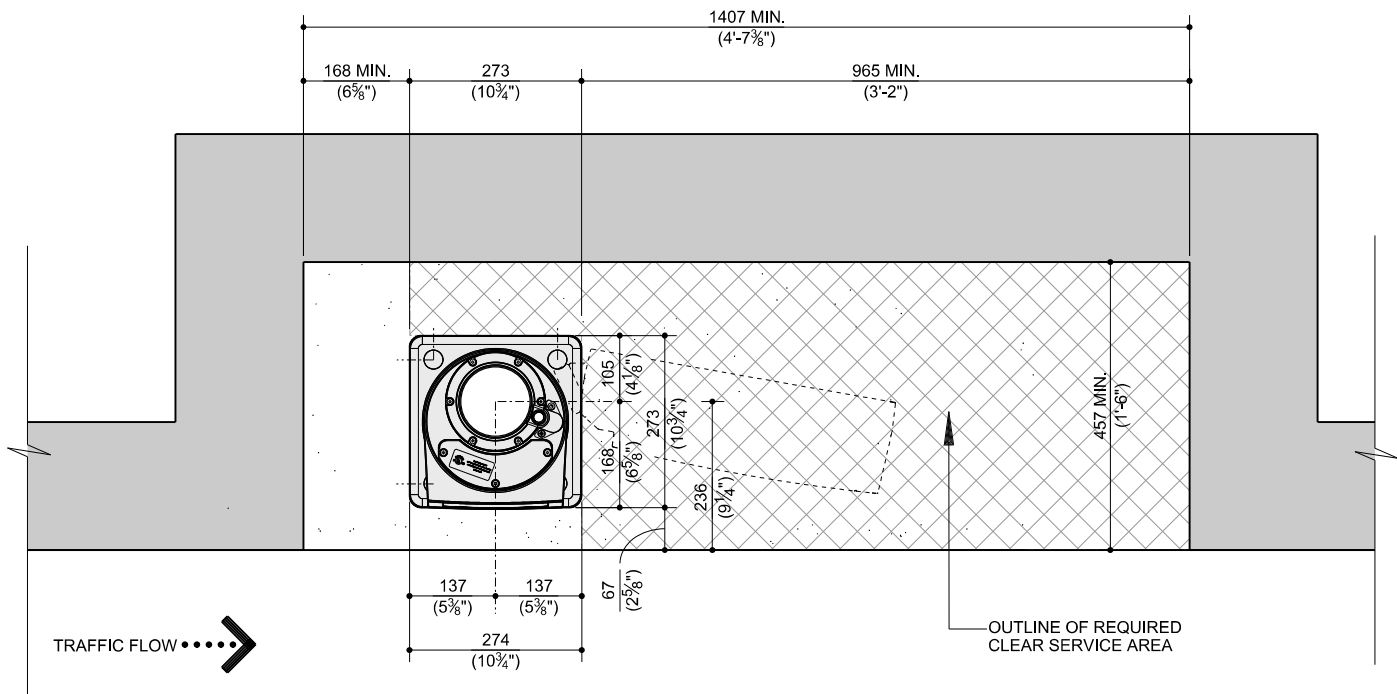
DETAILS SHOWN ARE FOR ILLUSTRATION ONLY AND ACTUAL SITE CONDITIONS MUST BE VERIFIED BEFORE INSTALLATION

SEE SHEET 4 OF 8 FOR TYPICAL DRIVE-UP SCENARIO.

DIMENSIONS IN MILLIMETRES
(DIMENSIONS IN FEET-INCHES)



PLAN VIEW - FIRST LANE MINIMUM CURB



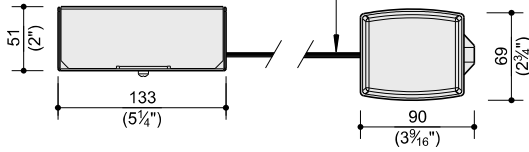
PLAN VIEW - MINIMUM WALL RECESS

CALL 1-800-999-3600

DIMENSIONS IN MILLIMETRES (DIMENSIONS IN FEET-INCHES)

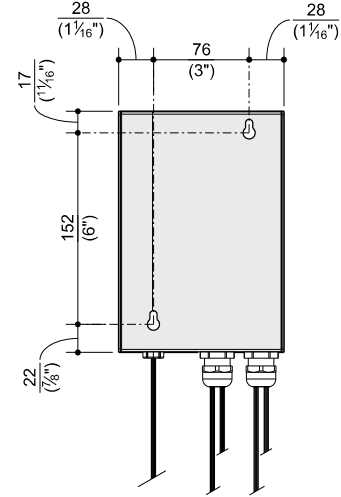


TRANSFORMER CABLE - "HH" CABLE
#20 GAUGE STRANDED TINNED COPPER,
2 CONDUCTOR, PVC INSULATION, TWISTED,
WITH SHIELD, 300V (91-200212-0062)
BY DIEBOLD

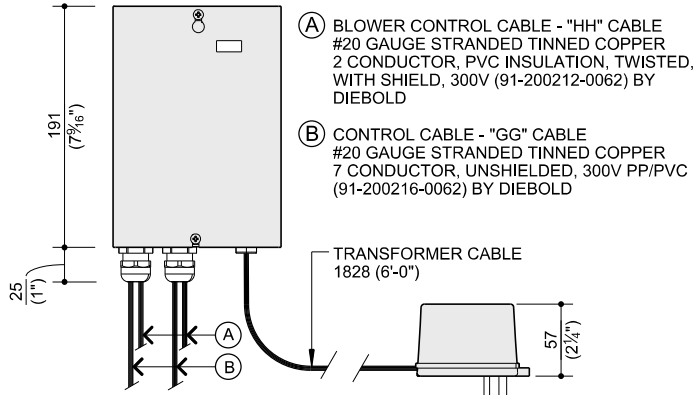


PLAN VIEW

NOTE:
LOCATE IN OPERATORS KNEE SPACE AREA



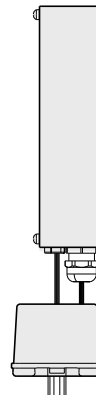
BACK VIEW



FRONT VIEW

- (A) BLOWER CONTROL CABLE - "HH" CABLE
#20 GAUGE STRANDED TINNED COPPER
2 CONDUCTOR, PVC INSULATION, TWISTED,
WITH SHIELD, 300V (91-200212-0062) BY
DIEBOLD
- (B) CONTROL CABLE - "GG" CABLE
#20 GAUGE STRANDED TINNED COPPER
7 CONDUCTOR, UNSHIELDED, 300V PP/PVC
(91-200216-0062) BY DIEBOLD

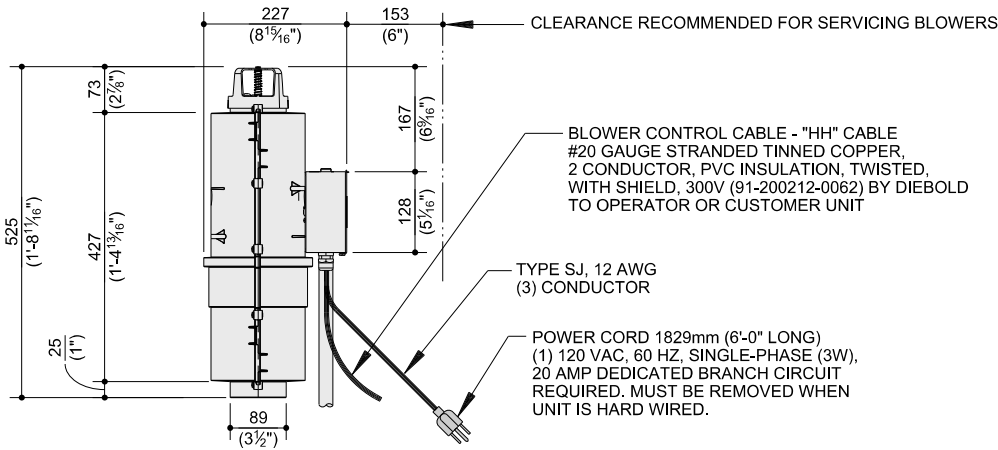
TRANSFORMER CABLE
1828 (6'-0")



SIDE VIEW

VACUUM AIR TUBE 21GX CONTROL BOX

PAGE 6 OF 8



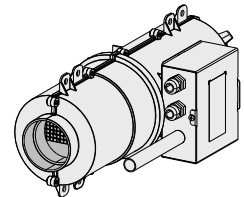
PLAN VIEW

CLEARANCE RECOMMENDED FOR SERVICING BLOWERS

BLOWER CONTROL CABLE - "HH" CABLE
#20 GAUGE STRANDED TINNED COPPER,
2 CONDUCTOR, PVC INSULATION, TWISTED,
WITH SHIELD, 300V (91-200212-0062) BY DIEBOLD
TO OPERATOR OR CUSTOMER UNIT

TYPE SJ, 12 AWG
(3) CONDUCTOR

POWER CORD 1829mm (6'-0") LONG
(1) 120 VAC, 60 HZ, SINGLE-PHASE (3W),
20 AMP DEDICATED BRANCH CIRCUIT
REQUIRED. MUST BE REMOVED WHEN
UNIT IS HARD WIRED.

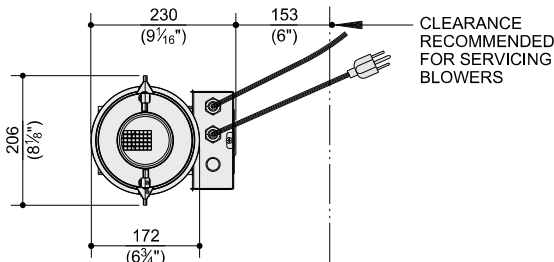


PERSPECTIVE

NOTE:

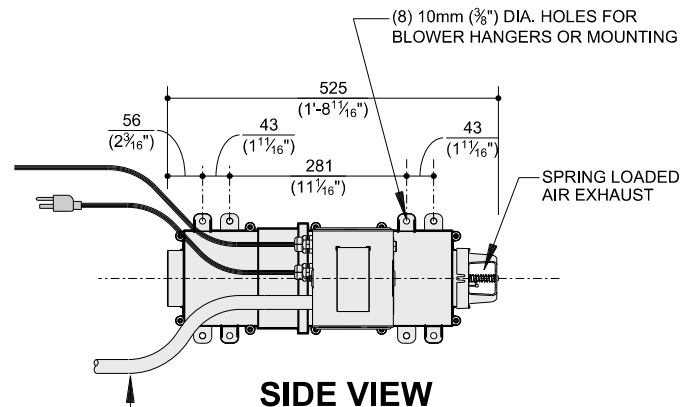
BLOWER CAN BE MOUNTED VERTICALLY.

BLOWER WEIGHT 3.3 kg (7.2 LBS.)



FRONT VIEW

CLEARANCE RECOMMENDED FOR SERVICING BLOWERS



SIDE VIEW

1,524mm (5'-0") OF FLEXIBLE CONDUIT TO ALLOW FOR SERVICEABILITY (BY OWNER'S E.C.). CONDUIT MAY BE REQUIRED WHEN LOCAL CODES SPECIFY HARD WIRE INSTALLATION. OWNER'S E.C. TO PROVIDE "DISCONNECT" SWITCH TO BLOWER WHEN HARD WIRED. SEE CUT SHEET FILE NUMBER 178-2080 FOR HARD WIRED INSTALLATION REQUIREMENTS.

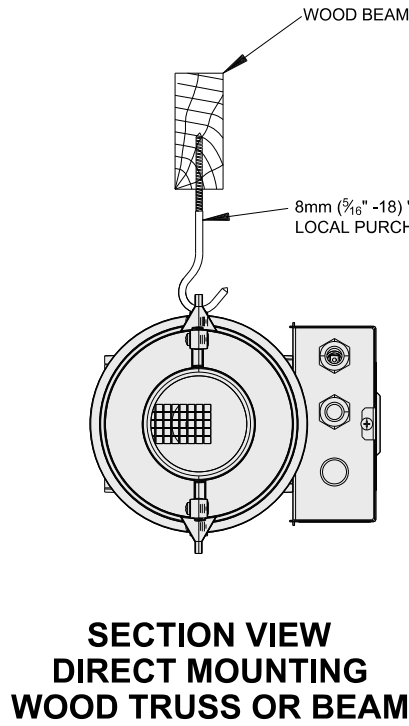
VACUUM AIR TUBE 21GX BLOWER PACKAGE ASSEMBLY

ALL DIMENSIONS AND DESIGN CRITERIA SUBJECT TO CHANGE WITHOUT NOTICE

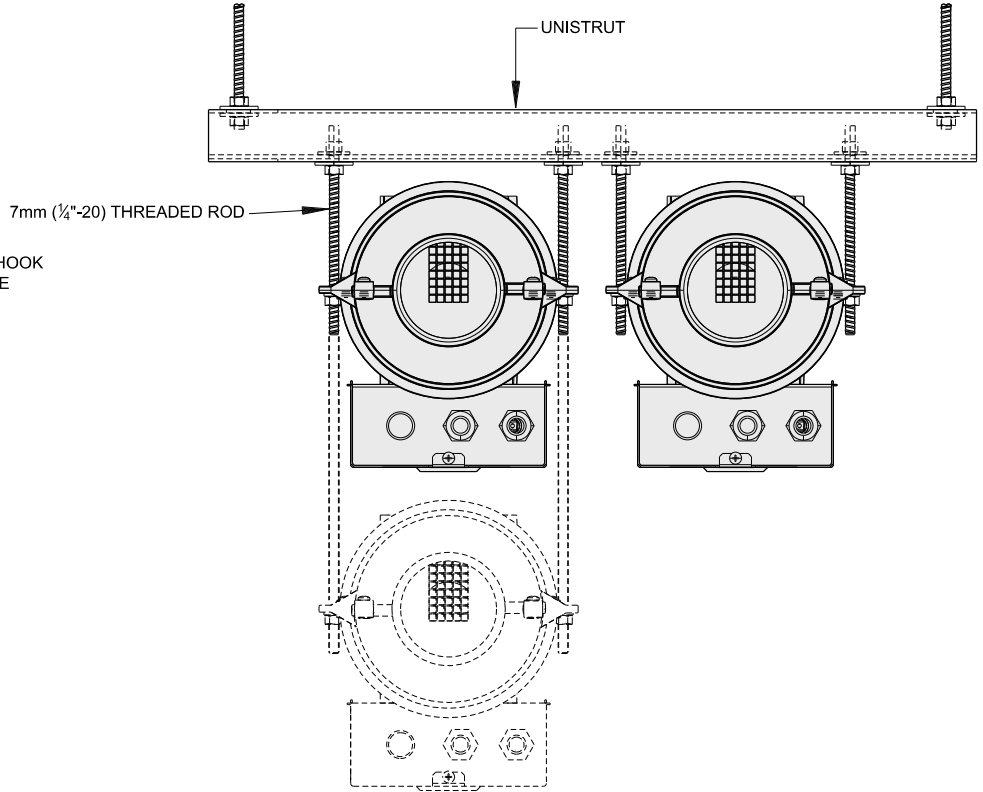
FILE NO. 178-2076 REV. 2

CALL 1-800-999-3600

DIMENSIONS IN MILLIMETRES
(DIMENSIONS IN FEET-INCHES)



**SECTION VIEW
DIRECT MOUNTING
WOOD TRUSS OR BEAM**

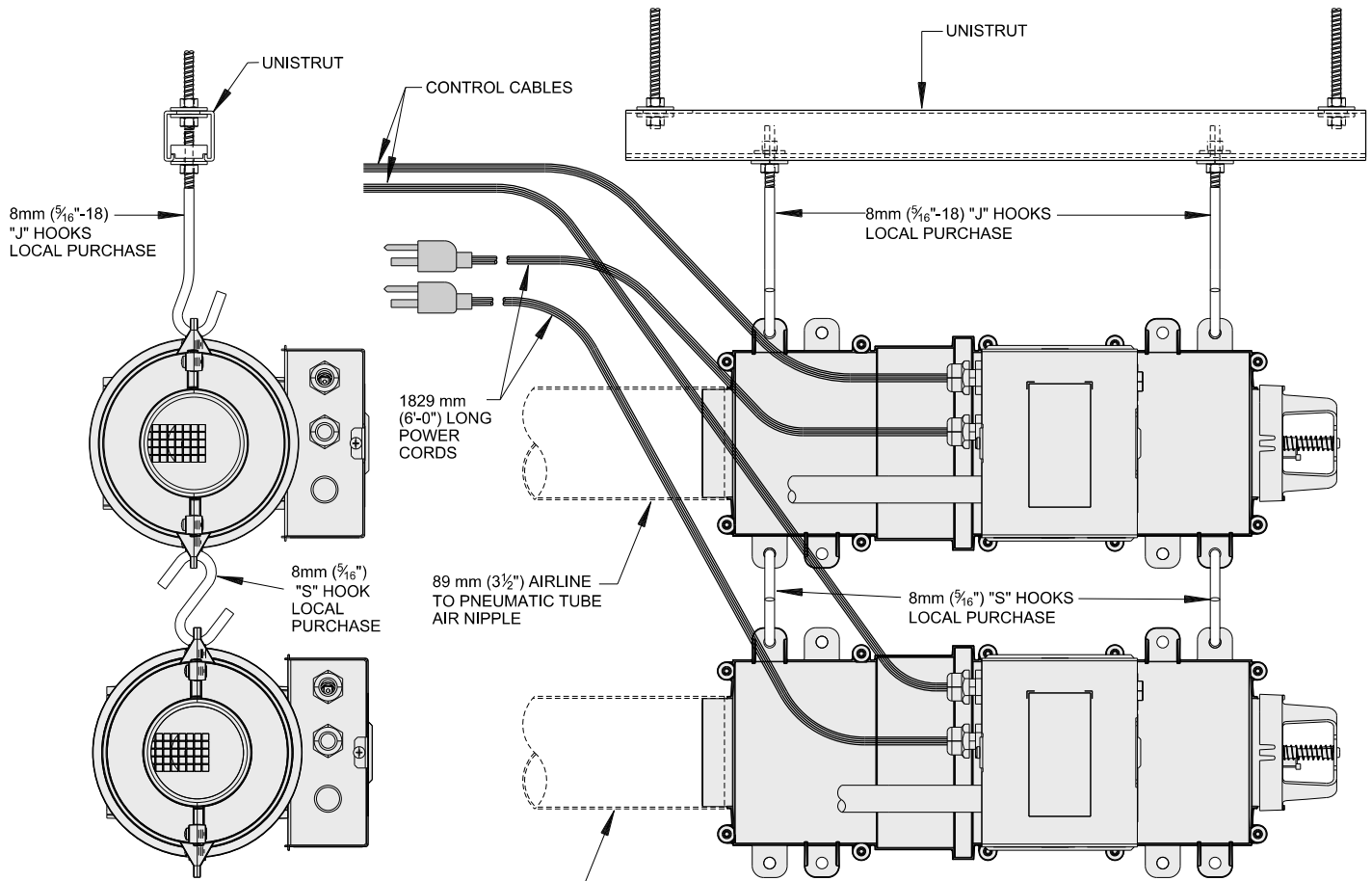


**BLOWER MOUNTING FROM SUSPENDED UNISTRUT
AND 6mm (1/4\"/>**

PAGE 7 OF 8

*ALL DIMENSIONS AND DESIGN CRITERIA
SUBJECT TO CHANGE WITHOUT NOTICE*

FILE NO. 178-2076 REV. 2

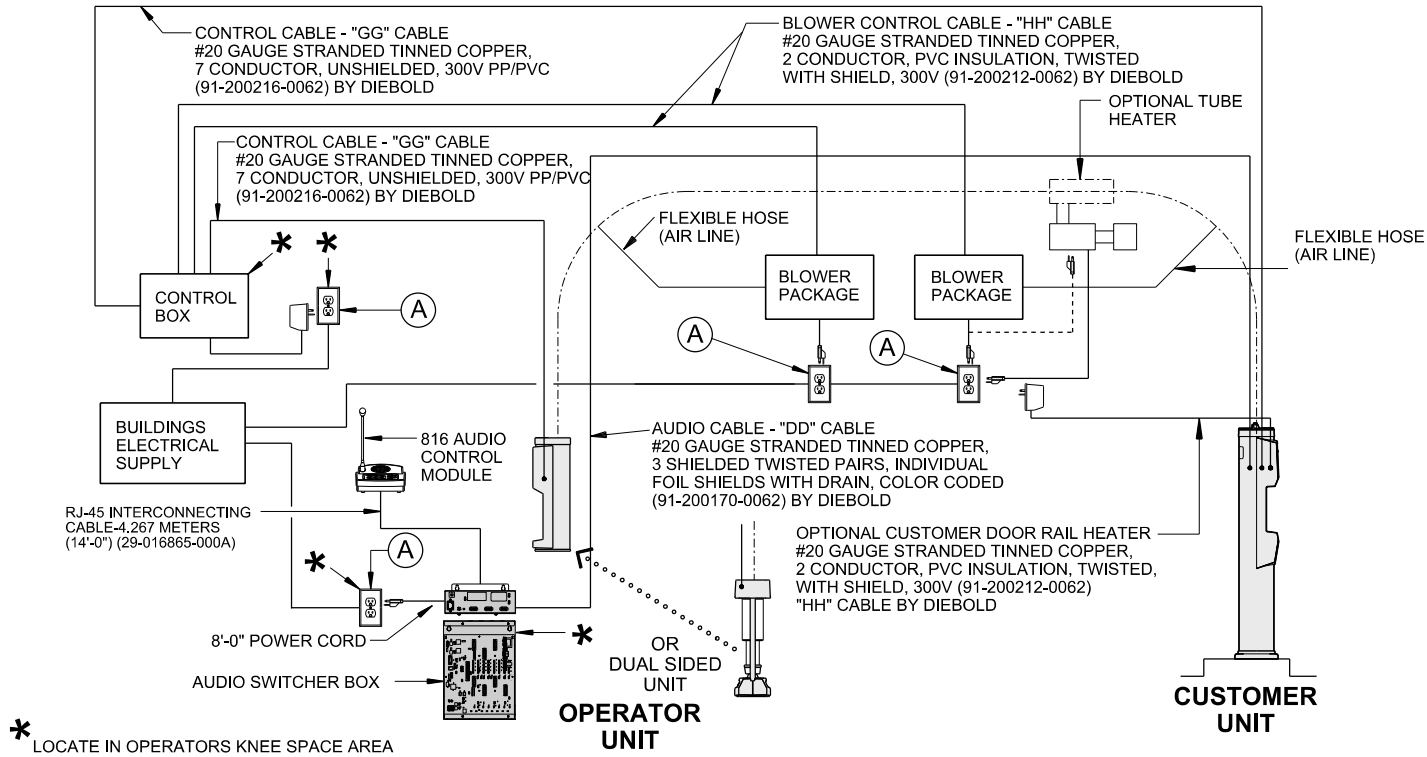
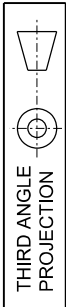


**SECTION VIEW
BLOWER MOUNTING FROM SUSPENDED UNISTRUT SUPPORT WITH HANGERS**

FRONT VIEW

CALL 1-800-999-3600

DIMENSIONS IN MILLIMETRES
(DIMENSIONS IN FEET-INCHES)



SCHEMATIC FOR CONTROL/AUDIO CABLES OVER TO OVER

NOTE:

- (A) OWNER'S ELECTRICAL CONTRACTOR TO PROVIDE (1) DUPLEX OUTLET AT EACH "A"
ON (1) 120 VAC, 60 HZ, SINGLE-PHASE (3W), 20 AMP DEDICATED BRANCH CIRCUIT

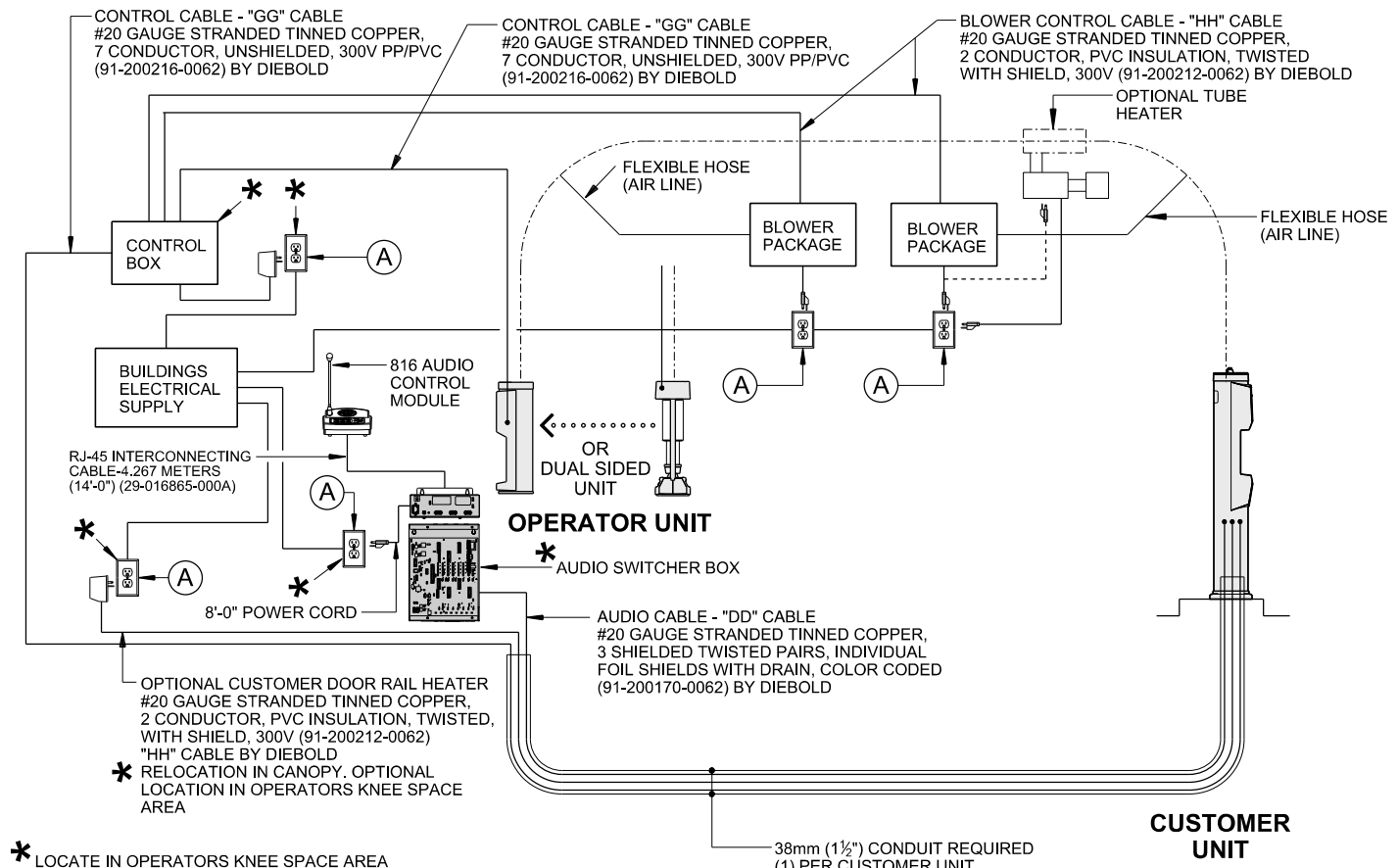
SEE CUT SHEET FILE NUMBER 178-1953 FOR POWER CONSOLIDATION AND
DISTRIBUTION GUIDELINES.

SEE CUT SHEET FILE NUMBER 178-2080 FOR HARD WIRED
INSTALLATION REQUIREMENTS.

PAGE 8 OF 8

"ALL DIMENSIONS AND DESIGN CRITERIA
SUBJECT TO CHANGE WITHOUT NOTICE"

FILE NO. 178-2076 REV. 2



SCHEMATIC FOR CONTROL/AUDIO CABLES UNDER TO UNDER