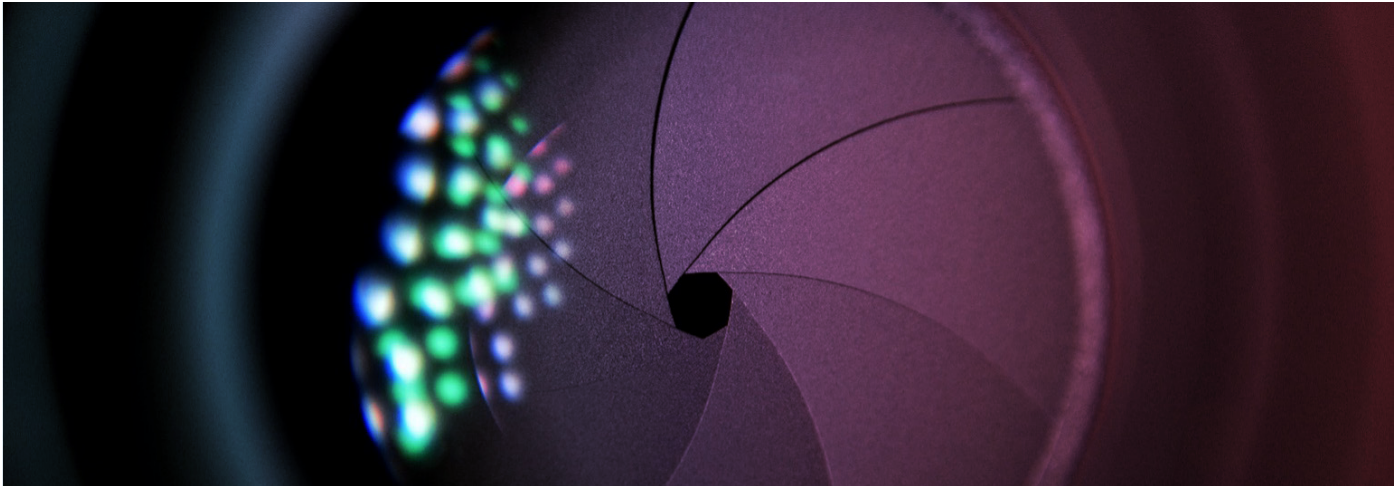


# Additional security monitoring to protect banks and consumers



For over 160 years Diebold Nixdorf has been securing our customers through a range of physical and electronic security products and services. Our DN Series is no different: security throughout with the most comprehensive range of safes, locks and security features. Covering physical security, logical security with Trusted Device Communication (TDC) ensuring all critical modules communicate securely, and cyber security with a range of applications provide the greatest level of protection for any ATM in the market today.

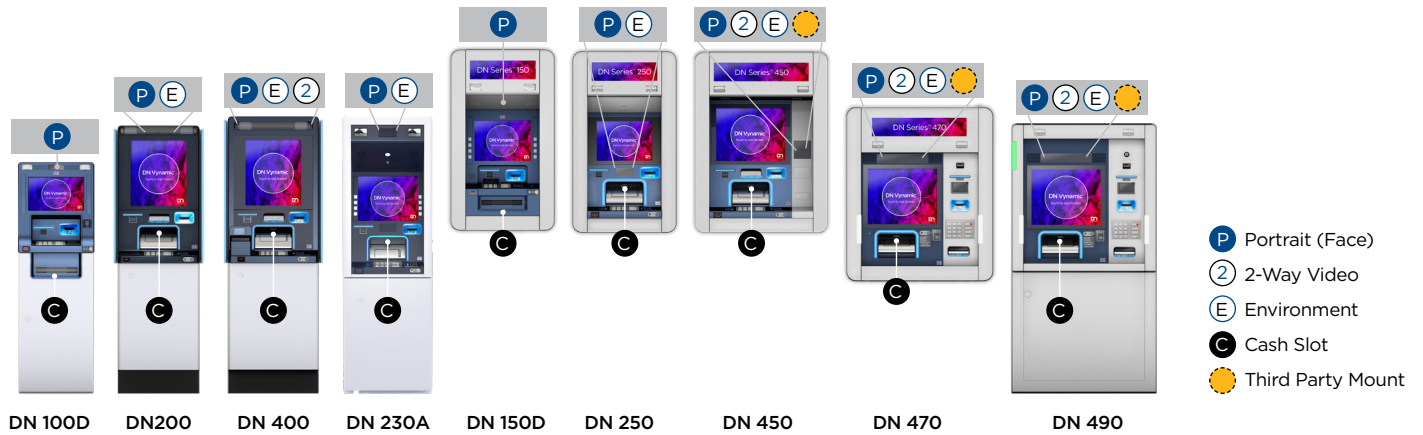
In order to provide improved surveillance at the front of the ATM, camera provisions are provided that include a portrait, an environment and a cash-slot camera on the DN Series according to model.

- Options for traditional NTSC/PAL analog cameras for interface with existing CCTV systems and USB connected cameras for more localized ATM-based applications are available.
- IP cameras are becoming more widely utilized, but DN's experience is that these are more aligned to our customers current monitoring strategies and with many options available would remain locally sourced.



Example of portrait and environment camera image capture from DN 250 camera provision

## Solution Details



### CURRENT DN SERIES CAMERA SOLUTION FOR USB AND ANALOG CAMERAS

The below chart describes the camera solutions currently offered as part of DN Series and are subject to change. Dimensions are included for guidance for customers who are looking to locally source a camera solution.

A camera pre-disposition option provides a mounting bracket and cable extension for either an analog BNC connector or RJ45 for IP connection at the cable input/output aperture located in the bottom of the safe. The mounting bracket would provide the ability to support any camera that falls within the dimensions indicated.



PARAMETER	PORTRAIT/ ENVIRONMENTAL USB CAMERA	CASH SLOT USB CAMERA	PORTRAIT/ ENVIRONMENTAL ANALOG CAMERA	CASH SLOT ANALOG CAMERA
COMPANY	Weldex	Weldex	Weldex	Weldex
MODEL	WDUB-1318C-XX -2.4mm	WDUB-1318C-XX -2.4mm	WDUB-1305C-XX -2.4mm	WDUB-1305C-XX -2.4mm
DIMENSIONS	16 mm*22mm*28mm	16 mm*22mm*28mm	16 mm*22mm*28mm	16 mm*22mm*28mm
FIELD OF VIEW	135° (H) X 80° (V) x 175° (D)	135° (H) X 80° (V) x 175° (D)	120° (H) X 87° (V) x 160° (D)	120° (H) X 87° (V) x 160° (D)
RESOLUTION	Max 1080P 1932H x 1088V	Max 1080P 1932H x 1088V	720x480	720x480
WIDE DYNAMIC RANGE	-	-	120dB	120dB
AUTO WHITE BALANCE	Yes	Yes	-	-
INTERFACE	High Speed USB 2.0 (UVC 1.1)	High Speed USB 2.0 (UVC 1.1)	Video Output CVBS (Ana-log) PAL or NTSC	Video Output CVBS (Ana-log) PAL or NTSC
TEMPERATURE RANGE	-40°C - 85°C	-40°C - 85°C	-40°C - 85°C	-40°C - 85°C