



**BEETLE /FUSION Pole Mount Kit
Installation Guide**

The reproduction, transmission or use of this document or its contents is not permitted without express authority.
Offenders will be liable for damages.

All rights, including rights created by patent grant or registration of a utility model or design, are reserved.

Delivery subject to availability; technical modifications possible.
Copyright© Wincor Nixdorf International GmbH, 2011

BEETLE /FUSION Pole Mount Kit
Installation Guide

Edition Oct 2011

Contents

Introduction	1
Symbols used in this guide.....	1
Important safety precautions	2
Installation notes	2
Installation	3
Tools required	3
Installing pole mount kit.....	4

Introduction

This installation guide provides you with the information you require to install the pole mount kit onto the Beetle /Fusion system.

Symbols used in this guide

- Text following this mark represents an item in a list.

“ “ Text in quotation marks contains references to other chapters or sections in this document.

• Paragraphs following this symbol are actions to be performed in the specific order.



Text following this symbol has to be given special attention in order to avoid damage or injury.



This symbol identifies paragraphs which contain general notes to facilitate use of the device and help avoid operating errors.

Important safety precautions



Please read the following notes carefully before doing any work on the device.

Installation notes



When installing the device and/or doing any work on it, make sure that it is disconnected from the power.

Take care for ESD protection when you are in contact with electronic parts such as harddisk etc.

Repairs



Repair work may only be carried out by authorized personnel.

Unauthorized opening of the device or repair work carried out improperly could result in considerable danger to the user.

In case of noncompliance, Wincor Nixdorf International GmbH excludes all liability.

Installation

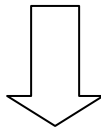
This chapter describes the steps to be taken to install the pole mount kit onto the system.

Tools required

- T10 Torx screwdriver

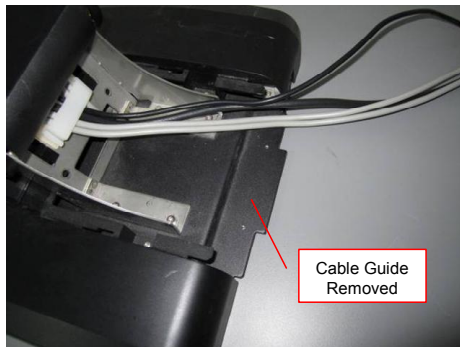
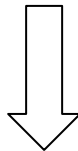
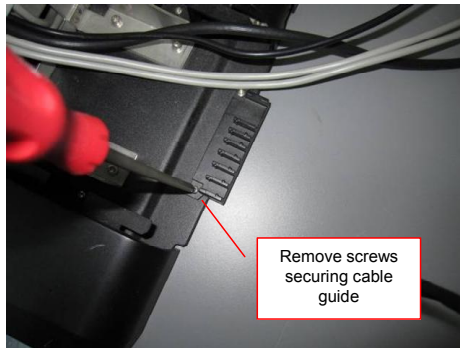
Installing pole mount kit

- Remove stand back cover from desktop by sliding stand back cover outward (see picture below).

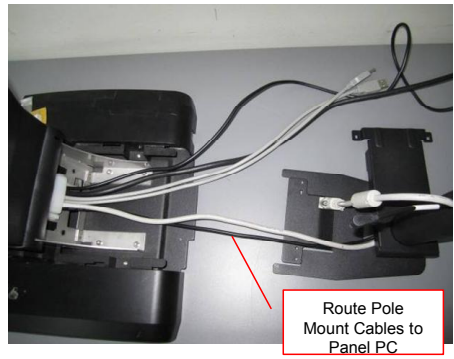


Stand cover
removed

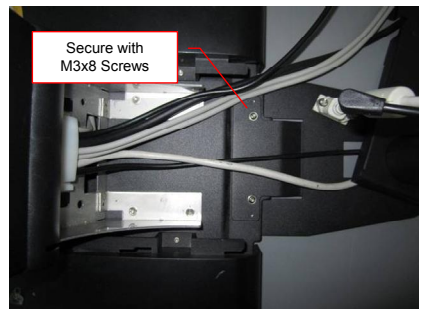
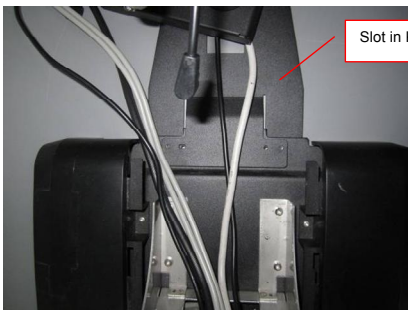
- Remove cable guide from desktop stand by removing screws securing cable guide (see picture below).



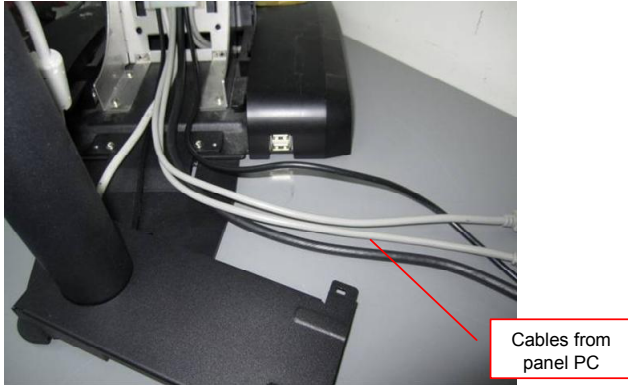
- Swivel pole mount cable cover to one side and route pole mount cables to the panel PC (see picture below).



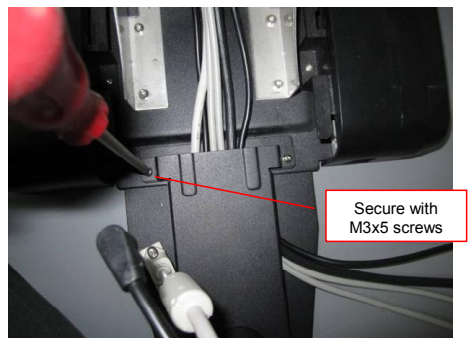
- Slot in pole mount kit into desktop stand and secure it with two M3x8 screws (see picture below).



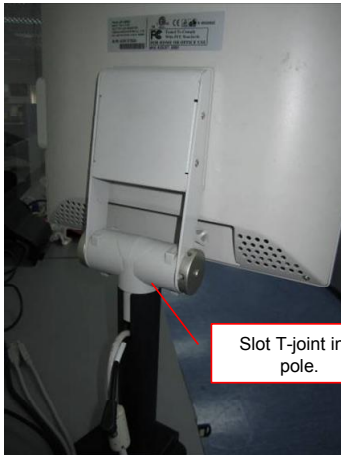
- Route cables from panel PC to the side (see picture below).



- Swivel back pole mount cable cover and secure it with two M3x5 screws (see picture pillow).



- Slot in T-joint of secondary display into the pole (see picture below).



Slot T-joint into pole.



- Connect the cables to the secondary display (see picture below).



- Reassemble the desktop stand cover by sliding in the back cover onto panel PC (see picture below).



Published by
Wincor Nixdorf Pte Ltd
2, Kallang Sector
Singapore 349277

Part No.: **01750226826 A**